



## Seznam souřadnic (S-JTSK)

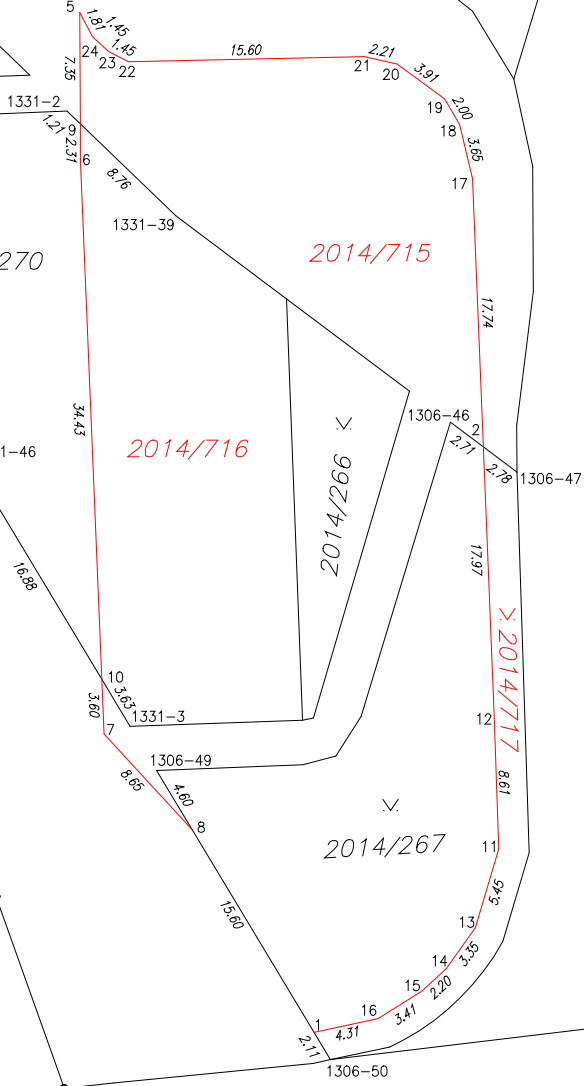
Číslo bodu	Souřadnice pro zápis do KN			Poznámka
	Y	X	kód kv.	
1306-46	737143.44	1050730.52	3	
1306-47	737139.04	1050733.82	3	
1306-49	737162.87	1050753.56	3	
1306-50	737151.38	1050772.68	3	
1331-2	737168.79	1050709.96	3	
1331-3	737164.63	1050750.64	3	
1331-39	737161.61	1050716.88	3	
1331-46	737175.20	1050733.06	3	
1	737152.47	1050770.87	3	
2	737141.26	1050732.15	3	
5	737167.95	1050703.43	3	
6	737167.91	1050713.13	3	
7	737166.35	1050751.14	3	
8	737160.51	1050757.50	3	
9	737167.92	1050710.80	3	
10	737166.50	1050747.53	3	
11	737140.24	1050758.73	3	
12	737140.54	1050750.11	3	
13	737141.78	1050763.94	3	
14	737143.72	1050766.65	3	
15	737145.32	1050768.15	3	
16	737148.23	1050769.97	3	
17	737141.97	1050714.42	3	
18	737142.83	1050710.86	3	
19	737143.82	1050709.15	3	
20	737146.98	1050706.83	3	
21	737149.16	1050706.35	3	
22	737164.74	1050706.69	3	
23	737166.04	1050706.02	3	
24	737167.12	1050705.04	3	

2890/3

2516/18

2014/382

2014/265



2014/490

2014/270

2014/715

2014/383

2014/716

2014/266

2014/384

2014/267

2014/717

2888/1